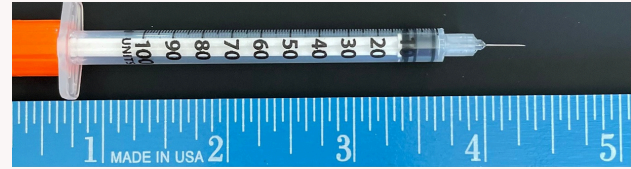


TYPES OF SYRINGES

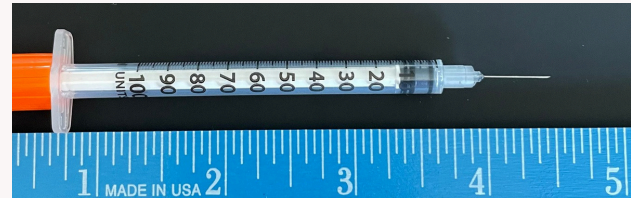
	Barrel	Length
31 GAUGE	1CC	5/16"

Also known as:
 -Ultra ultra fine
 -Bee stingers
 -Short tip 5/16th inch



30 GAUGE	1CC	1/2"
-----------------	------------	-------------

Also known as:
 -Ultra fine
 -30 longs



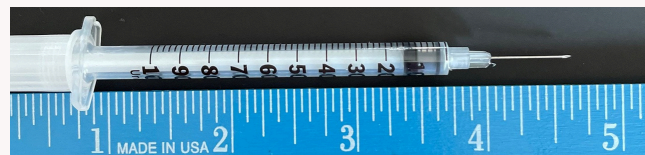
28 GAUGE	.5CC & 1CC	1/2"
-----------------	-----------------------	-------------

Also known as:
 -Biggie smalls -1cc barrel
 -Smalls -0.5cc barrel



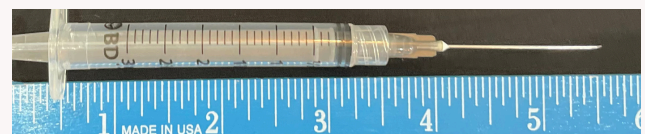
27 GAUGE	1CC	5/8"
-----------------	------------	-------------

Also known as:
 -Bigs
 -Big bigs
 -5/8 inch



22 GAUGE	3CC	1 1/2"
-----------------	------------	---------------

-Steroid/ Hormone



FIND A SAFE VEIN AND A BACK-UP VEIN

- Pick a safer injection site

BEST	<ul style="list-style-type: none"> Arms Back of hand
OK	<ul style="list-style-type: none"> Legs Feet
AVOID	<ul style="list-style-type: none"> Groin Neck Wrist

- CLEAN AREA WITH ALCOHOL SWAB PRIOR TO INJECTING**
- USE A NEW NEEDLE EVERY TIME YOU INJECT**

FOR THE PRESCRIBER

USE EPIC ORDER SET "SYRINGE PRESCRIBING"

Syringe Prescribing ✓ Accept

☒ **Syringes**

- ☐ insulin syringe U-100 0.5 mL 28 gauge x 1/2" ("Small")
- ☐ insulin syringe U-100 1 mL 27 X 5/8" ("Big")
- ☐ insulin syringe U-100 1 mL 28 X 1/2" ("Biggie Small")
- ☐ insulin syringe U-100 1 mL 30 X 1/2" ("Ultra Fine" or "30's")
- ☐ insulin syringe U-100 1 mL 31 X 5/16" ("Ultra Ultra Fine" or "Bee Stingers")
- ☐ SYRINGE WITH NEEDLE 3 mL 22 X 1 1/2" ("Steroid/Hormone")

☒ **Intranasal Naloxone**

☒ naloxone 4 mg/0.1 mL intranasal (Narcan) single-step
Spray 0.1 mL into one nostril. Repeat with second device into other nostril after 3 min if no or minimal response.
Normal, Disp-0.2 mL, R-2
Interchange is mandated unless the practitioner indicates 'no substitution' in accordance with the law (105 CMR 721.000). Preferred language German

This medication will not be e-prescribed. Invalid items: Provider

☒ **Alcohol Prep Pads**

☒ alcohol swabs (ALCOHOL PREP PADS) PadM
Wipe arm with pad prior to injecting.
Normal, Disp-100 each, R-0
Interchange is mandated unless the practitioner indicates 'no substitution' in accordance with the law (105 CMR 721.000). Preferred language German

This medication will not be e-prescribed. Invalid items: Provider

Next Required ✓ Accept

PRESCRIPTION DETAILS

- When deciding quantity: ask patient preference, how many times a day they inject, housing situation for storage etc.
 - 1 Box of syringes = 100 syringes
 - 1 Box of Alcohol swabs = 100 swabs
- Rx Instructions for syringe: Clean area with alcohol swab then inject with new syringe 4 x a day PRN.
- Standard rx order is 100 syringes with 11 refills, modify as needed.

ADDITIONAL SUPPLIES

- Band aids
 - Cotton balls
 - Tourniquets
 - Sharps container
 - Sterile water vials (2.5ml)
 - Cooker (vessel to dissolve powder/ solid drugs prior to injection)
- *These items may not be covered by insurance. May be available for purchase, also available at harm reduction programs.

WRITING A PRESCRIPTION OUTSIDE OF ORDER SET

- Diagnosis Codes (not always required):
 - ZZ20.6: contact with and (suspected) exposure to HIV
 - Z20.2: contact with and (suspected) exposure to infection with a predominantly sexual mode of transmission
 - Z77.21: contact with and (suspected) exposure to potentially hazardous body fluids
- If not auto populated when prescribing: please include barrel size, gauge and syringe size.
- Include directions of use: number of times a day patient injects Ex: Clean area with alcohol swab and then inject with a new syringe 3-4x a day PRN
- Include quantity (syringes come in 10 packs and one box has 100 syringes), dispensed and refills.